

Lake Havasu Unified School District
Warehouse Supply Catalog
Table of Contents

Click on a section name to go there.

(Unless you are looking at a hard copy.)

General Supplies (page 1)
Paper Supplies (page 8)
Forms (page 13)
Art Supplies (page 14)
Audio-Visual Supplies (page 19)
Custodial Supplies (page 22)
Bulbs & Ballasts (page 24)
Computer Supplies (page 27)
Printing & Typing Supplies (page 29)

General Supplies Catalog 12/29/03

STOCK #	UNIT	ITEM	DESCRIPTION
10010	EA	BATTERY, AA	AA, 1.5 VOLT, ALKALINE
10015	EA	BATTERY, AAA	AAA, ALKALINE
10020	EA	BATTERY, C	C, 1.5 VOLT, ALKALINE
10025	EA	BATTERY, D	D, 1.5 VOLT, ALKALINE
10030	EA	BATTERY, 9 VOLT	9 VOLT, ALKALINE
10035	EA	BATTERY, LANTERN	COMES IN SEVERAL STYLES. CALL GARY TO ORDER. BE PREPARED TO SPECIFY VOLTAGE, SCREW OR SPRING TERMINAL, AND SHAPE.
10045	****	NOTE ON BINDERS & PORTFOLIOS	WHEN YOU ORDER, IF A SPECIFIC COLOR IS NOT IMPORTANT, SAY "ANY AVAILABLE COLOR." BINDERS AND PORTFOLIOS ARE NOT FOR STUDENT USE.
10050	BX/25	BINDER COVER, BLUE	(ALSO CALLED REPORT COVER) 8 1/2 X 11, PANEL & BORDER, 3 FASTENERS. COMES WITH LABELS FOR COVER. FOR STAFF USE ONLY.
10055	BX/25	BINDER COVER, GRAY	SAME AS FOR STOCK #10050.
10060	BX/25	BINDER COVER, RED	SAME AS FOR STOCK #10050.
10065	BX/25	BINDER COVER, YELLOW	SAME AS FOR STOCK #10050.
10070	BX/25	BINDER PORTFOLIO, BLUE	SAME AS BINDER COVER, BUT HAS 2 POCKETS. FOR STAFF USE ONLY.
10075	BX/25	BINDER PORTFOLIO, GRAY	SAME AS FOR STOCK #10070
10080	BX/25	BINDER PORTFOLIO, RED	SAME AS FOR STOCK #10070
10085	BX/25	BINDER PORTFOLIO, YELLOW	SAME AS FOR STOCK #10070
10100	EA	CALENDAR BASE	HOLDS CALENDAR #10105.
10105	EA	CALENDAR REFILL	3 1/2 X 6 WITH APPOINTMENT SCHEDULE. FOR CALENDAR BASE #10100. USUALLY NOT AVAILABLE UNTIL OCTOBER.
10110	BX/100	CARBON PAPER, PENCIL	8 1/2 X 11
10115	BX/100	CARBON PAPER, TYPEWRITER	8 1/2 X 11
10150	PK/100	CARDS, INDEX 3 X 5 BLANK	
10155	PK/100	CARDS, INDEX 5 X 8 BLANK	
10160	PK/100	CARDS, INDEX 3 X 5 RULED	
10165	PK/100	CARDS, INDEX 5 X 8 RULED	
10170	BX/12	CHALK	DUSTLESS, WHITE IN COLOR. ONE BOX OF 12 STICKS.
10175	BX/100	CHART PAPER	24 X 36, 1 1/2" GUIDELINE RULED.
10180	EA	CHART RACK	24 X 30, 1 1/2" RULED CHART TABLET ON A CARDBOARD EASEL.
10185	BX/10	CHART RINGS, 3"	ALSO CALLED LOOSE LEAF RINGS. 3" DIAMETER. IF YOU REQUEST OTHER THAN 3" SIZE, COST WILL BE CHARGED BACK TO YOUR SCHOOL.

General Supplies Catalog 12/29/03

STOCK #	UNIT	ITEM	DESCRIPTION
10190	EA	CHART TABLET, 24 X 16 UNRULED.	SPIRAL BOUND.
10200	EA	CHART TABLET, 24 X 16 1" RULED	SPIRAL BOUND.
10205	EA	CHART TABLET, 24 X 16 1 1/2" GUIDELINE RULED	SPIRAL BOUND.
10210	EA	CHART TABLET, 24 X 32 1" RULED	SPIRAL BOUND.
10215	EA	CHART TABLET, 24 X 32 1 1/2" GUIDELINE RULED	SPIRAL BOUND.
10220	EA	CLIPBOARD	LEGAL SIZE (9 X 15 1/2).
10225	BX/12	CLIP, BUTTERFLY NO. 1 (LARGE)	ALSO CALLED IDEAL CLAMPS.
10230	BX/50	CLIP, BUTTERFLY NO. 2 (SMALL)	ALSO CALLED IDEAL CLAMPS.
10250	BX/100	CLIP, PAPER. NO. 1	YOUR REGULAR STYLE PAPER CLIP.
10255	BX/100	CLIP, PAPER. JUMBO	LARGER THAN #10250.
10260	EA	CLIP, SPRING 1 1/4" WIDE	ALSO CALLED BULLDOG CLIP.
10265	EA	CLIP, SPRING 2 5/8" WIDE	ALSO CALLED BULLDOG CLIP.
10270	EA	CLIP, SPRING 3" WIDE	ALSO CALLED BULLDOG CLIP.
10272	BX/100	COMB, BINDING, 1/4" BLACK	HOLDS UP TO 20 PAGES
10273	BX/100	COMB, BINDING, 1/2" BLACK	HOLDS UP TO 90 PAGES
10274	BX/50	COMB, BINDING, 1" BLACK	HOLDS UP TO 200 PAGES
		COMB, BINDING	CALL IF YOU NEED A SIZE OTHER THAN THOSE LISTED HERE.
10276	EA	COMPUTER, CD-R RECORDABLE DISC	RECORD ONE TIME
10278	EA	COMPUTER, CD-RW REWRITABLE DISC	RECORD MANY TIMES
10279	EA	COMPUTER, CD-RW/CD-R JEWEL CASE	REPLACEMENT PLASTIC CASE FOR ONE CD.
10280	BX/10	COMPUTER, 3.5" DISKETTE. IBM FORMATTED	
10285	BTL	CORRECTION FLUID, LEDGER BUFF	.6 OZ. BOTTLE OR LARGER.
10300	BTL	CORRECTION FLUID, WHITE MULTI-PURPOSE	.6 OZ. BOTTLE OR LARGER. SOLVENT BASE. LIQUID PAPER OR EQUAL. FOR TYPEWRITTEN, HANDWRITTEN, FAX & PHOTOCOPY CORRECTIONS.
10315	EA	CORRECTION TAPE, SELF-ADHESIVE 1/6"	1/6" X 600" ROLL
10320	EA	CORRECTION TAPE, SELF-ADHESIVE 2/6"	2/6" X 600" ROLL
10340	BX	CRAYONS, KINDERGARTEN ASST. COLORS	KINDERGARTEN (JUMBO) CRAYONS, 8 DIFFERENT COLORS IN A TUCK BOX.
10345	DZ	CRAYON, KINDER. BLACK	LARGE CRAYON FOR KINDERGARTEN USE.



General Supplies Catalog 12/29/03

STOCK #	UNIT	ITEM	DESCRIPTION
10350	DZ	CRAYON, KINDER. BLUE	LARGE CRAYON FOR KINDERGARTEN USE.
10355	DZ	CRAYON, KINDER. BROWN	LARGE CRAYON FOR KINDERGARTEN USE.
10360	DZ	CRAYON, KINDER. GREEN	LARGE CRAYON FOR KINDERGARTEN USE.
10365	DZ	CRAYON, KINDER. ORANGE	LARGE CRAYON FOR KINDERGARTEN USE.
10370	DZ	CRAYON, KINDER. PEACH	LARGE CRAYON FOR KINDERGARTEN USE.
10375	DZ	CRAYON, KINDER. PURPLE	LARGE CRAYON FOR KINDERGARTEN USE.
10380	DZ	CRAYON, KINDER. RED	LARGE CRAYON FOR KINDERGARTEN USE.
10385	DZ	CRAYON, KINDER. WHITE	LARGE CRAYON FOR KINDERGARTEN USE.
10390	DZ	CRAYON, KINDER. YELLOW	LARGE CRAYON FOR KINDERGARTEN USE.
10450	BX/500	ENVELOPES, BUSINESS	PLAIN, 4 1/8 X 9 1/2, 24 LB.
10455	BX/100	ENVELOPE, CLASP 6 X 9	28 LB., WITH CLASP AND GUMMED FLAP.
10460	BX/100	ENVELOPE, CLASP 7 1/2 X 10 1/2	SAME AS FOR STOCK #10455.
10465	BX/100	ENVELOPE, CLASP 9 X 12	SAME AS FOR STOCK #10455.
10470	BX/100	ENVELOPE, CLASP 10 X 13	SAME AS FOR STOCK #10455.
10475	BX/100	ENVELOPE, CLASP 10 X 15	SAME AS FOR STOCK #10455.
10478	BX/100	ENVELOPE, CLASP 11 1/2 X 14 1/2	SAME AS FOR STOCK #10455.
10480	EA	ENVELOPES, INTEROFFICE MAIL	12 X 16, STRING & BUTTON CLOSURE.
10490	EA	ERASER, CHALKBOARD	
10495	EA	ERASER, PENCIL	SOFT PINK, BEVELED ENDS. 2 1/4 X 3/4 X 7/16", PINK PEARL #100 OR EQUAL. FOR STAFF USE ONLY.
10500	DZ	ERASER, SLIP-ON	WEDGE SHAPED, TO FIT ON END OF STANDARD PENCIL. FOR STAFF USE ONLY. 
10505	EA	ERASER, WHITE MARKER BOARD	FOR CLEANING DRY ERASE MARKER FROM WHITE MARKER BOARDS.
10510	BX/100	FASTENER, ROUND HEAD #3	BRASS ROUND HEAD, 3/4" LONG.
10515	BX/100	FASTENER, ROUND HEAD #5	BRASS ROUND HEAD, 1 1/4" LONG.
10520	BX/50	FASTENER, STANDARD PRONG 1" CAPACITY	2 PIECE, 2 3/4" CENTERS 
10525	BX/50	FASTENER, STANDARD PRONG 2" CAPACITY	
10530	BX/50	FASTENER, STANDARD PRONG 3 1/2" CAPACITY	
10540	BX/250	FILE FOLDER LABELS, BLUE	SELF-ADHESIVE, 3 1/2 X 5/8. FAN FOLD.
10545	BX/250	FILE FOLDER LABELS, GREEN	SAME AS FOR STOCK #10540.
10550	BX/250	FILE FOLDER LABELS, LAVENDER	SAME AS FOR STOCK #10540.

General Supplies Catalog 12/29/03

STOCK #	UNIT	ITEM	DESCRIPTION
10555	BX/250	FILE FOLDER LABELS, ORANGE	SAME AS FOR STOCK #10540.
10560	BX/250	FILE FOLDER LABELS, RED	SAME AS FOR STOCK #10540.
10565	BX/250	FILE FOLDER LABELS, YELLOW	SAME AS FOR STOCK #10540.
10575	BX/100	FILE FOLDER, LEGAL	14 3/4 X 9 1/2, THIRD CUT, 11 POINT MANILA.
10576	BX/100	FILE FOLDER, LETTER	11 3/4 X 9 1/2, THIRD CUT, 11 POINT MANILA.
10577	BX/25	FILE FOLDER, HANGING LEGAL	BOX OF 25 HANGING LEGAL FILE FOLDERS. 1/3 CUT WITH TABS AND INSERTS.
10580	BX/25	FILE FOLDER, HANGING LETTER	BOX OF 25 HANGING LETTER FILE FOLDERS. 1/3 CUT WITH TABS AND INSERTS.
10581	EA	FILE FOLDER, HANGING LEGAL FRAME	METAL FRAME FOR HOLDING LEGAL SIZE HANGING FILES IN A FILE DRAWER.
10582	EA	FILE FOLDER, HANGING LETTER FRAME	METAL FRAME FOR HOLDING LETTER SIZE HANGING FILES IN A FILE DRAWER.
10585	BX/25	FILE FOLDER, PRESSBOARD LEGAL	LEGAL SIZE, 1/3 CUT, 1" EXPANSION.
10590	BX/25	FILE FOLDER, PRESSBOARD LETTER	LETTER SIZE, 1/3 CUT, 1" EXPANSION.
10600	BX/50	FILE JACKET, LEGAL	LEGAL SIZE, MANILA. 2" EXPANSION.
10605	BX/50	FILE JACKET, LETTER	LETTER SIZE, MANILA. 2" EXPANSION.
10610	BX/25	FILE POCKET, LEGAL	LEGAL SIZE, 1 3/4" EPANSION. RED FIBER.
10615	BX/25	FILE POCKET, LETTER	LETTER SIZE, 1 3/4" EPANSION. RED FIBER.
10630	EA	FLAG, CLASSROOM	UNITED STATES. 16" X 24" MOUNTED ON BLACK ENAMELED STICK WITH GILT SPEARPOINT.
10635	EA	FLAG HOLDER	FOR CLASSROOM FLAG WITH 3/8-1/2" STAFF. FOR 45 DEGREE ANGLE DISPLAY.
10640	EA	FLAG, OUTDOOR ARIZONA	ARIZONA STATE FLAG. 4' X 6'
10645	EA	FLAG, OUTDOOR U.S.	UNITED STATES FLAG, 4' X 6'
10660	EA	GLUE, WHITE 4 OZ.	4 OZ. BOTTLE ELMER'S GLUE-ALL OR EQUAL.
10665	EA	GLUE, WHITE GALLON	GALLON CONTAINER. ELMER'S GLUE-ALL OR EQUAL.
10670	SET	GUIDES, A-Z, 3" X 5"	PRESSBOARD, 1/5 CUT
10675	SET	GUIDES, A-Z, 5" X 8"	PRESSBOARD, 1/5 CUT
10680	SET	GUIDES, A-Z, LEGAL	LEGAL SIZE FILE GUIDE. MANILA, WITHOUT EYELET.
10685	SET	GUIDES, A-Z, LETTER	LETTER SIZE FILE GUIDE. MANILA, WITHOUT EYELET.
10690	EA	HIGHLIGHTER, YELLOW	YELLOW INK. FOR HIGHLIGHTING IN BOOKS OR ON OTHER PAPER.
10695	BX/5000	LABEL, CONTINUOUS FORM	3 1/2 X 15/16, ONE ACROSS. SELF-ADHESIVE, 5000 PER BOX.
10705	BX/5000	LABEL, CONTINUOUS FORM	4 X 1 7/16, ONE ACROSS, SELF ADHESIVE. 5,000 PER BOX.
10706	BX/3000	LABEL, FOR LASER & INK JET PRINTERS	THIRTY 1" x 2 5/8" LABELS PER PAGE. AVERY #5160 OR EQUAL.

General Supplies Catalog 12/29/03

STOCK #	UNIT	ITEM	DESCRIPTION
10708	BX/2000	LABEL, FOR LASER & INK JET PRINTERS	TWENTY 1" X 4" LABELS PER PAGE. AVERY #5161 OR EQUAL.
10710	BX/25	LABEL, REPORT COVER	1 1/2 X 3 1/2, SELF ADHESIVE. FOR USE ON REPORT COVERS. 25 LABELS PER BOX.
10720	EA	LABELER TAPE, 3/8" BLACK	
10725	EA	LABELER TAPE, 3/8" BLUE	
10730	EA	LABELER TAPE, 3/8" GREEN	
10735	EA	LABELER TAPE, 3/8" ORANGE	
10740	EA	LABELER TAPE, 3/8" RED	
10745	EA	LABELER TAPE, 1/2" BLACK	
10750	EA	LABELER TAPE, 1/2" BLUE	
10755	EA	LABELER TAPE, 1/2" GREEN	
10760	EA	LABELER TAPE, 1/2" ORANGE	
10765	EA	LABELER TAPE, 1/2" RED	
10805	RL	LAMINATING FILM, 25"	25" X 500' ON A 1" CORE. CLEAR FINISH. 1.5 MILS THICK.
10820	EA	MARKER, DRY ERASE BLACK	BROAD TIP. FOR USE ON WHITE MARKER BOARDS.
10825	EA	MARKER, DRY ERASE BLUE	SAME AS FOR STOCK #10820
10830	EA	MARKER, DRY ERASE GREEN	SAME AS FOR STOCK #10820
10835	EA	MARKER, DRY ERASE RED	SAME AS FOR STOCK #10820
10840	SET	MARKER, DRY ERASE SET	FOUR COLOR SET, BULLET TIP. FOR USE ON WHITE MARKER BOARDS.
10845	SET	MARKERS, OVERHEAD PROJECTOR SET	FINE POINT, 4 COLORS, WATERBASE.
10850	SET	MARKERS, WATERCOLOR SET	BROAD FELT TIP, 8 COLORS. CRAYOLA 7708 OR EQUAL.
10855	EA	MARKER, PERMANENT BLACK	BROAD CHISEL TIP.
10860	EA	MARKER, PERMANENT RED	BROAD CHISEL TIP.
10870	EA	PAD, LEGAL 5 X 8	RULED CANARY BOND.
10880	EA	PAD, LEGAL 8 1/2 X 11	RULED CANARY BOND.
10895	SET	PENCILS, ASST. COLORS	12 COLORS TO SET, 7" PENCILS. CRAYOLA #04012 OR EQUAL.
10905	DZ	PENCILS, GRADING RED	WITH ERASER.
10910	GROSS	PENCILS, PRIMARY	5/16" DIAMETER, SOFT LEAD, NO ERASER.
10915	GROSS	PENCIL, #2 FOR TESTS	#2 LEAD WITH ERASER. FOR TAKING COMPUTER SCORED TESTS. NOT AVAILABLE FOR GENERAL WRITING.
10920	GROSS	PENCIL, #2½ GENERAL WRITING	#2½ LEAD WITH ERASER. FOR GENERAL CLASSROOM USE. SCHOOL WILL PROVIDE EACH K-8 STUDENT WITH ONLY ONE PENCIL EACH SEMESTER. STUDENT WILL PROVIDE HIS OWN ADDITIONAL PENCILS.
10925	EA	PENCIL SHARPENER	FOR MOUNTING ON WALL. BOSTON RANGER 55 #1001.

General Supplies Catalog 12/29/03

STOCK #	UNIT	ITEM	DESCRIPTION
10926	EA	PENCIL SHARPENER, ELECTRIC	HUNT/BOSTON 1800 OR EQUAL.
10930	PAIR	PENCIL SHARPENER CUTTER	REPLACEMENT CUTTER FOR BOSTON RANGER 55. CUTTERS AND CARRIER IN ONE UNIT.
10931	EA	PENCIL SHARPENER CUTTER	REPLACEMENT CUTTER FOR BOSTON KS SHARPENER. CUTTERS AND CARRIER IN ONE UNIT.
10932	EA	PENCIL SHARPENER CUTTER	REPLACEMENT CUTTER FOR BEROL GIANT. CUTTERS AND CARRIER IN ONE UNIT.
10940	DZ	PENS, MED. BALL POINT BLACK	BIC PM OR EQUAL.
10945	DZ	PENS, MED. BALL POINT BLUE	BIC PM OR EQUAL.
10950	DZ	PENS, MED. BALL POINT RED	BIC PM OR EQUAL.
10955	DZ	PENS, FINE POROUS TIP BLACK	BEROL BOLDLINER, FABER- CASTELL SUPERWRITER, OR EQUAL.
10960	DZ	PENS, FINE POROUS TIP RED	SAME AS FOR STOCK #10955.
10970	BX/300	PINS, STRAIGHT	1 1/8".
10975	PAD	POST-IT NOTES, SMALL	1 1/2 X 2.
10980	PAD	POST-IT NOTES, MEDIUM	3 X 3.
10990	BX/200	REINFORCEMENTS	FOR NOTEBOOK PAPER HOLE. SELF-STICKING.
10995	EA	RUBBER CEMENT, 4 OZ.	4 OZ. BOTTLE WITH BRUSH IN CAP.
11000	EA	RUBBER CEMENT, GAL.	ONE GALLON CAN. SANFORD, ROSS,
11005	EA	RUBBER CEMENT THINNER	ONE PINT CAN.
11010	BX	RUBBER BANDS, ASST.	1/4 LB. PACKAGE.
11015	BX	RUBBER BANDS, LARGE	1/4 LB. BOX OF #64 BANDS.
11025	EA	SCISSORS, KINDERGARTEN	4" LONG, 1 9/16" CUT, BLUNT POINT.
11030	EA	SCISSORS, PRIMARY+	5" LONG, SHARP POINT. FOR LEFT OR RIGHT HANDED. THESE ARE SHARP. DEFINITELY NOT FOR YOUNGEST STUDENTS.
11040	EA	SCISSORS, TEACHER'S	8" LONG.
11050	PK/100	SENTENCE STRIPS, INDIVIDUAL	3" X 24", MANILA. GUIDELINE RULED.
11055	RL	SENTENCE STRIP, ROLL	3" X 200' ROLL. GUIDELINE RULED, MANILA.
11060	EA	SPONGE, SCRUBBING	6" X 3 1/2". NYLON SCOURING PAD ON ONE SIDE, CEEULOSE SPONGE ON OTHER. SCOTCH-BRITE #74 OR EQUAL.
11065	EA	STAMP PAD, BLACK	BLACK INK, 2 3/4" X 4 3/4"
11070	EA	STAMP PAD, RED	RED INK, 2 3/4" X 4 3/4"
11075	EA	STAMP PAD INK, BLACK	2 OZ. ROLL-ON BOTTLE.
11080	EA	STAMP PAD INK, RED	2 OZ. ROLL-ON BOTTLE.
11090	EA	STAPLE REMOVER	PINCER TYPE.
11095	EA	STAPLER, COMPACT	HOLDS HALF STRIP OF STANDARD OR B8 STAPLES.

General Supplies Catalog 12/29/03

STOCK #	UNIT	ITEM	DESCRIPTION
11100	EA	STAPLER, FULL STRIP	HOLDS FULL STRIP OF STANDARD STAPLES.
11110	BX	STAPLES, B8	5000 STAPLES FOR BOSTITCH B8 STAPLER. CHISEL POINT, 1/4".
11115	BX	STAPLES, STANDARD	1/4", CHISEL POINT, 5000 PER BOX. GENERALLY FITS ALL NON-ELECTRIC STAPLERS EXCEPT THE BOSTITCH B8.
11120	BX	STAPLES, ELECTRIC STAPLER	FOR SWINGLINE 66A ELECTRIC STAPLER. 10,000 PER BOX, CHISEL POINT.
11125	PK/270	STARS, SELF-ADHESIVE	1/2" STARS. 5 DIFFERENT COLORS PER PACK.
11135	RL	TAPE, CALCULATOR 2 1/4"	2 1/4" X 165'
11150	EA	TAPE, CASSETTE 60 MIN.	BLANK GENERAL PURPOSE TAPE WITH 30 MIN. PER SIDE. EACH TAPE IN ITS OWN PLASTIC BOX. WITH LEADER.
11155	EA	TAPE, CASSETTE 90 MIN.	BLANK GENERAL PURPOSE TAPE WITH 45 MIN. PER SIDE. EACH TAPE IN ITS OWN PLASTIC BOX. WITH LEADER.
11156	EA	TAPE, CASSETTE 120 MIN.	BLANK GENERAL PURPOSE TAPE WITH 120 MIN. PER SIDE. EACH TAPE IN ITS OWN PLASTIC BOX. WITH LEADER.
11160	EA	TAPE, MICROCASSETTE	FOR SOME POCKET RECORDERS AND ANSWERING MACHINES. 60 MIN.
11170	RL	TAPE, MASKING 1/2"	1/2" X 60 YD.
11175	RL	TAPE, MASKING 3/4"	3/4" X 60 YD.
11180	RL	TAPE, MASKING 1"	1" X 60 YD.
11185	RL	TAPE, MASKING 1 1/2"	1 1/2" X 60 YD.
11190	RL	TAPE, MASKING 2"	2" X 60 YD.
11195	RL	TAPE, MASKING 3"	3" X 60 YD.
11200	RL	TAPE, "MAGIC" 3/4"	3/4" X 36 YD. TRANSPARENT TAPE.
11205	RL	TAPE DISPENSER	WEIGHTED BASE. FOR REGULAR "SCOTCH" TAPE ON A 1" CORE. NOT FOR MASKING TAPE.
11215	BX/100	THUMB TACKS	SOLID HEAD, 7/16" (#3), 100 PER BOX.
11225	BX/100	TRANSPARENCIES, ACETATE SHEETS	WRITE ON IT WITH TRANSPARENCY MARKING PENS (CATALOG STOCK #10845). NOT FOR USE IN XEROX OR THERMOFAX MACHINE.
11230	BX/100	TRANSPARENCIES, XEROGRAPHIC CLEAR	8 1/2 X 10 1/2 PROJECTION TRANSPARENCIES FOR USE IN XEROX 1090 AND 5052.
11245	CONE	TWINE	WHITE COTTON, 16 PLY. 2 1/2 LBS.. 1500 FT. PER CONE.
11250	EA	WHISTLE, WITH LANYARD	METAL WHISTLE. ACME THUNDERER OR EQUAL.
11255	EA	YARDSTICK/METERSTICK	1/8" AND CENTIMETER SCALE. HARDWOOD.

PAPER SUPPLIES CATALOG 12/30/03

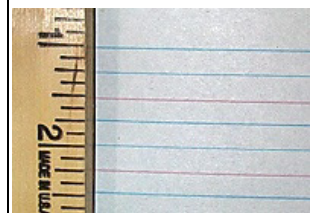
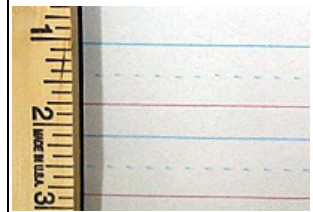
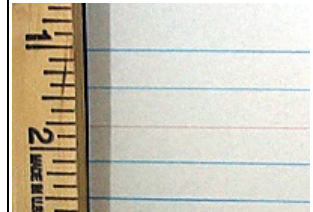
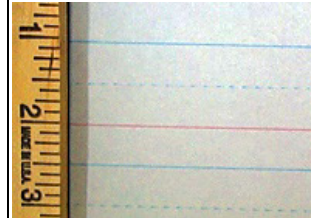
STOCK #	UNIT	ITEM	DESCRIPTION
2075	ROLL	BUTCHER PAPER, WHITE	36" X 1000" ROLL. 50 LBS.
2090	PK	CARD STOCK, 8 1/2 X 11 WHITE	90#, LONG GRAIN. CAN BE USED IN COPY MACHINES. 250 SHEETS PER PACKAGE,
2100	CASE	COMPUTER PRINTER PAPER, 9 1/2 X 11	1 PART, PIN FEED, FAN FOLD. 20#, 2600 SHEETS PER CASE.
2105	CASE	COMPUTER PRINTER PAPER, 14 7/8" X 8 1/2"	FOR WIDE CARRIAGE PRINTERS. 1/2" GREEN BAR. 1 PART, PIN FEED, FAN FOLD, 18#. 2800 SHEETS PER CASE. ONLY USED AT DISTRICT OFFICE.
2115	PK/50	CONSTRUCTION PAPER, ASST. COLORS	9 X 12, 80 LB. GROUNDWOOD
2120	PK/50	CONSTRUCTION PAPER, BLACK	9 X 12, 80 LB. GROUNDWOOD
2125	PK/50	CONSTRUCTION PAPER, BLUE	9 X 12, 80 LB. GROUNDWOOD
2130	PK/50	CONSTRUCTION PAPER, LT. BLUE	9 X 12, 80 LB. GROUNDWOOD
2140	PK/50	CONSTRUCTION PAPER, BROWN	9 X 12, 80 LB. GROUNDWOOD
2145	PK/50	CONSTRUCTION PAPER, LT. BROWN	9 X 12, 80 LB. GROUNDWOOD
2150	PK/50	CONSTRUCTION PAPER, GRAY	9 X 12, 80 LB. GROUNDWOOD
2155	PK/50	CONSTRUCTION PAPER, EMERALD GREEN	9 X 12, 80 LB. GROUNDWOOD
2165	PK/50	CONSTRUCTION PAPER, LT. GREEN	9 X 12, 80 LB. GROUNDWOOD
2170	PK/50	CONSTRUCTION PAPER, LAVENDER	9 X 12, 80 LB. GROUNDWOOD SOMETIMES CALLED LILAC.
2175	PK/50	CONSTRUCTION PAPER, MAGENTA	9 X 12, 80 LB. GROUNDWOOD
2180	PK/50	CONSTRUCTION PAPER, ORANGE	9 X 12, 80 LB. GROUNDWOOD
2185	PK/50	CONSTRUCTION PAPER, PEACH	9 X 12, 80 LB. GROUNDWOOD SOME COMPANIES CALL THIS SALMON OR NATURAL.
2190	PK/50	CONSTRUCTION PAPER, PINK	9 X 12, 80 LB. GROUNDWOOD
2195	PK/50	CONSTRUCTION PAPER, HOLIDAY RED	9 X 12, 80 LB. GROUNDWOOD
2200	PK/50	CONSTRUCTION PAPER, VIOLET	9 X 12, 80 LB. GROUNDWOOD
2205	PK/50	CONSTRUCTION PAPER, BRIGHT WHITE	9 X 12, 80 LB. GROUNDWOOD
2210	PK/50	CONSTRUCTION PAPER, YELLOW	9 X 12, 80 LB. GROUNDWOOD
2215	PK/50	CONSTRUCTION PAPER, YELLOW GREEN	9 X 12, 80 LB. GROUNDWOOD. ONLY LISTED UNTIL EXISTING STOCK IS GONE.
2220	PK/50	CONSTRUCTION PAPER, ASST. COLORS	12 X 18, 80 LB. GROUNDWOOD
2225	PK/50	CONSTRUCTION PAPER,	12 X 18, 80 LB. GROUNDWOOD

PAPER SUPPLIES CATALOG 12/30/03

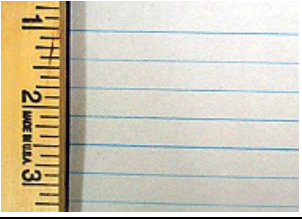
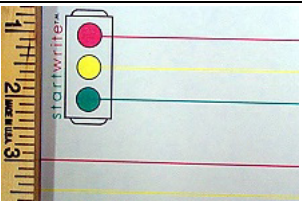
STOCK #	UNIT	ITEM	DESCRIPTION
		BLACK	
2230	PK/50	CONSTRUCTION PAPER, BLUE	12 X 18, 80 LB. GROUNDWOOD
2235	PK/50	CONSTRUCTION PAPER, LT. BLUE	12 X 18, 80 LB. GROUNDWOOD
2245	PK/50	CONSTRUCTION PAPER, BROWN	12 X 18, 80 LB. GROUNDWOOD
2250	PK/50	CONSTRUCTION PAPER, LT. BROWN	12 X 18, 80 LB. GROUNDWOOD
2255	PK/50	CONSTRUCTION PAPER, GRAY	12 X 18, 80 LB. GROUNDWOOD
2260	PK/50	CONSTRUCTION PAPER, EMERALD GREEN	12 X 18, 80 LB. GROUNDWOOD
2265	PK/50	CONSTRUCTION PAPER, LT. GREEN	12 X 18, 80 LB. GROUNDWOOD
2270	PK/50	CONSTRUCTION PAPER, LAVENDER	12 X 18, 80 LB. GROUNDWOOD. SOMETIMES CALLED LILAC.
2275	PK/50	CONSTRUCTION PAPER, MAGENTA	12 X 18, 80 LB. GROUNDWOOD.
2280	PK/50	CONSTRUCTION PAPER, ORANGE	12 X 18, 80 LB. GROUNDWOOD.
2285	PK/50	CONSTRUCTION PAPER, PEACH	12 X 18, 80 LB. GROUNDWOOD. SOME COMPANIES CALL THIS SALMON OR NATURAL.
2290	PK/50	CONSTRUCTION PAPER, PINK	12 X 18, 80 LB. GROUNDWOOD.
2295	PK/50	CONSTRUCTION PAPER, HOLIDAY RED	12 X 18, 80 LB. GROUNDWOOD.
2300	PK/50	CONSTRUCTION PAPER, VIOLET	12 X 18, 80 LB. GROUNDWOOD.
2305	PK/50	CONSTRUCTION PAPER, BRIGHT WHITE	12 X 18, 80 LB. GROUNDWOOD.
2310	PK/50	CONSTRUCTION PAPER, YELLOW	12 X 18, 80 LB. GROUNDWOOD.
2315	PK/50	CONSTRUCTION PAPER, YELLOW GREEN	12 X 18, 80 LB. GROUNDWOOD. ONLY LISTED UNTIL EXISTING STOCK IS GONE.
2390	REAM	CROSS SECTION PAPER, 1/8" RULED, 9 X 12	CREAM MANILA PAPER. 50 LB. RULED ONE SIDE.
2395	REAM	CROSS SECTION PAPER, 1/4" RULED, 9 X 12	CREAM MANILA PAPER. 50 LB. RULED ONE SIDE.
2400	REAM	CROSS SECTION PAPER, 1/2" RULED, 9 X 12	CREAM MANILA PAPER. 50 LB. RULED ONE SIDE.
2405	REAM	CROSS SECTION PAPER, 1" RULED, 9 X 12	CREAM MANILA PAPER. 50 LB. RULED ONE SIDE.
2420	REAM	DRAWING PAPER, MANILA	9 X 12, 50 LB.
2425	REAM	DRAWING PAPER, MANILA	12 X 18, 50 LB.
2430	REAM	DRAWING PAPER, MANILA	18 X 24, 50 LB.
2435	REAM	DRAWING PAPER, MANILA	24 X 36, 50 LB.
2440	REAM	DRAWING PAPER, WHITE	9 X 12, WHITE SULPHITE, 60 LB.

PAPER SUPPLIES CATALOG 12/30/03

STOCK #	UNIT	ITEM	DESCRIPTION
2445	REAM	DRAWING PAPER, WHITE	12 X 18, WHITE SULPHITE, 60 LB.
2450	REAM	DRAWING PAPER, WHITE	18 X 24, WHITE SULPHITE, 60 LB.
2485	PK/100	FINGER PAINT PAPER	16 X 22, 60 LB.
2490	REAM	GRAPH PAPER, 1/4" RULED	BLUE OR GREEN LINES, RULED BOTH SIDES. 16 LB. WHITE SULPHITE.
2491	REAM	GRAPH PAPER, METRIC 1 CM. RULED	BLUE OR GREEN LINES, RULED BOTH SIDES. 16 LB. WHITE SULPHITE. THIS IS NOT ALWAYS AVAILABLE.
2500	REAM	NEWSPRINT WRITING PAPER, GRADE 1, D'NEALIAN	WHITE NEWSPRINT, 1" RULED ON BOTH SIDES. HEAVY BLUE HEADLINE, LIGHT BLUE BROKEN MID-LINE , AND HEAVY RED BASELINE. 11 X 8 1/2" PAPER RULED LONG WAY. ARN1109
2505	REAM	NEWSPRINT WRITING PAPER, GRADE 2. SOLID MID-LINE.	WHITE NEWSPRINT, 3/4" RULED ON BOTH SIDES. HEAVY BLUE HEADLINE, LIGHT BLUE SOLID MID-LINE, AND HEAVY RED BASELINE. 11 X 8 1/2" RULED LONG WAY. ARN1118
2510	REAM	NEWSPRINT WRITING PAPER, GRADE 2, D'NEALIAN	WHITE NEWSPRINT, 3/4" RULED ON BOTH SIDES. HEAVY BLUE HEADLINE, LIGHT BLUE BROKEN MID-LINE , AND HEAVY RED BASELINE. 11 X 8 1/2" PAPER RULED LONG WAY. ARN1110
2515	REAM	NEWSPRINT WRITING PAPER, GRADE 3	WHITE NEWSPRINT 1/2" RULED ON BOTH SIDES. HEAVY BLUE HEADLINE, LIGHT BLUE SOLID MID-LINE, AND HEAVY RED BASELINE. 11 X 8 1/2" PAPER RULED LONG WAY. ARN1106
2516	REAM	NEWSPRINT WRITING PAPER, GRADE 4	WHITE NEWSPRINT 3/8" RULED ON BOTH SIDES. HEAVY BLUE HEADLINE, LIGHT BLUE SOLID MIDLINE, AND HEAVY RED BASELINE. 8 X 10 1/2" PAPER RULED LONG WAY. REQUESTED BY 3RD GRADE. ARN1172



PAPER SUPPLIES CATALOG 12/30/03

STOCK #	UNIT	ITEM	DESCRIPTION
			TEACHERS.
2520	REAM	NEWSPRINT, PLAIN 9 X 12	32 LB.
2525	REAM	NEWSPRINT, PLAIN 12 X 18	32 LB.
2530	REAM	NEWSPRINT, PLAIN 18 X 24	32 LB.
2535	CASE	NEWSPRINT THEME PAPER	3/8" RULED BOTH SIDES. RULED SHORT WAY. ALL LINES SAME COLOR. EACH SHEET 8 1/2 X 11, 30 LB. 10 REAMS PER CASE. 
2540	REAM	NEWSPRINT, PICTURE STORY	12 X 18, WITH 6 1/2" BLANK SPACE ON TOP FRONT & BACK. 7/8" RULED WITH 7/16" MIDLINE. RULED BOTH SIDES. 32 LB.
2545	PK/100	OAK TAG, 9 X 12	125 LB. MANILA.
2550	PK/100	OAK TAG, 12 X 18	125 LB. MANILA.
2555	PK/100	OAK TAG, 24 X 36	125 LB. MANILA.
2560	PK/100	OAK TAG, ASST. COLORS 9 X 12	9 X 12, 125 LB.
2565	PK/100	OAK TAG, ASST. COLORS 22 X 28	22 X 28, 125 LB.
2575	REAM	ONIONSKIN, WHITE	8 1/2 X 11--4.5M. COCKLE FINISH. 9#, GRADE 25%, GRAIN 11.
2590	EA	RAILROAD BOARD, BLACK	22" X 28", 4 PLY, BOTH SIDES COLORED.
2600	EA	RAILROAD BOARD, MEDIUM BLUE	22" X 28", 4 PLY, BOTH SIDES COLORED.
2605	EA	RAILROAD BOARD, MEDIUM GREEN	22" X 28", 4 PLY, BOTH SIDES COLORED.
2610	EA	RAILROAD BOARD, ORANGE	22" X 28", 4 PLY, BOTH SIDES COLORED.
2615	EA	RAILROAD BOARD, RED	22" X 28", 4 PLY, BOTH SIDES COLORED.
2618	EA	RAILROAD BOARD, VIOLET	22" X 28", 4 PLY, BOTH SIDES COLORED.
2620	EA	RAILROAD BOARD, WHITE	22" X 28", 4 PLY, BOTH SIDES COLORED.
2625	EA	RAILROAD BOARD, CANARY YELLOW	22" X 28", 4 PLY, BOTH SIDES COLORED.
2635	QUIRE	TISSUE PAPER, ASST. COLORS	12" X 18", PACKAGED IN QUIRES (QUIRE IS 24 SHEETS.)
2640	QUIRE	TISSUE PAPER, WHITE	20" X 30", PACKAGED IN QUIRES (QUIRE IS 24 SHEETS.)
2645	PACK	WRITING PAPER, MACMILLAN "STARTWRITE" PAPER. THIS IS EXPENSIVE. PLEASE DON'T USE ANY MORE THAN NECESSARY.	ISBN 0-02-264540-3. RED, YELLOW & GREEN RULED. 248 SHEETS PER PACK. 8 1/2 X 11. 
2650	REAM	XEROX PAPER, BLUE	8 1/2 X 11, #20, PACKAGED IN REAMS.
2655	REAM	XEROX PAPER, BUFF	8 1/2 X 11, #20, PACKAGED IN REAMS.
2660	REAM	XEROX PAPER, CANARY	8 1/2 X 11, #20, PACKAGED IN REAMS.
2665	REAM	XEROX PAPER, GOLDENROD	8 1/2 X 11, #20, PACKAGED IN REAMS.

PAPER SUPPLIES CATALOG 12/30/03

STOCK #	UNIT	ITEM	DESCRIPTION
2670	REAM	XEROX PAPER, GREEN	8 1/2 X 11, #20, PACKAGED IN REAMS.
2672	REAM	XEROX PAPER, PEACH	8 1/2 X 11, #20, PACKAGED IN REAMS.
2675	REAM	XEROX PAPER, PINK	8 1/2 X 11, #20, PACKAGED IN REAMS.
2680	REAM	XEROX PAPER, SALMON	8 1/2 X 11, #20, PACKAGED IN REAMS.
2695	CASE	XEROX PAPER, WHITE	8 1/2 X 11, #20, PACKAGED IN REAMS. 10 REAMS PER CASE.
2720	REAM	XEROX PAPER, WHITE 14"	8 1/2 X 14, #20, PACKAGED IN REAMS. 10 REAMS PER CASE.

FORMS CATALOG 3/24/98

STOCK #	UNIT	ITEM	DESCRIPTION
3010	PAD/100	ADMISSION SLIPS	BLUE. FORM 8B
3020	PAD/100	REQUEST FOR STUDENT	WHITE. FORM 103A
3030	PAD/100	STUDENT PASS	WHITE. FORM 79D
3040	BOX/500	GENERAL RECORD #1171	
3050	BOX/500	STUDENT NAME & QUARTER GRADES #1191-2	
3060	BOX/500	TEMPORARY CLASS RECORD #1191-3	
3070	BOX/250	20 WEEK ATTENDANCE/ GRADE FORM #1113	
3080	EA	TEACHER'S RECORD BINDER	RING BINDER FOR ATTENDANCE AND GRADE RECORD FORMS
3090	EA	REPORT CARD, KINDER.	
3100	EA	REPORT CARD, PRIMARY	
3110	EA	REPORT CARD, INTER.	
3120	EA	ARIZONA SCHOOL HEALTH RECORD	FOR NURSES:
3130	EA	CUMULATIVE FOLDERS	
3140	BOX/250	PERMANENT RECORD CARDS	
3150	BOX/250	REGISTRATION CARDS	
3160	EA	LANGUAGE/ETHNIC SURVEY CARD	
3170	EA	OFFICIAL NOTICE OF STUDENT WITHDRAWAL	2-PART

ART SUPPLIES CATALOG 3/24/98

STOCK #	UNIT	ITEM	DESCRIPTION
4005	EA	BLOCK PRINTING INK, BLACK	75 CC. SPEEDBALL #3506 OR EQUAL. **MSDS**
4007	EA	BLOCK PRINTING INK, BLUE	75 CC. SPEEDBALL #3506 OR EQUAL. **MSDS**
4009	EA	BLOCK PRINTING INK, BROWN	75 CC. SPEEDBALL #3506 OR EQUAL. **MSDS**
4012	EA	BLOCK PRINTING INK, GREEN	75 CC. SPEEDBALL #3506 OR EQUAL. **MSDS**
4015	EA	BLOCK PRINTING INK, ORANGE	75 CC. SPEEDBALL #3506 OR EQUAL. **MSDS**
4018	EA	BLOCK PRINTING INK, RED	75 CC. SPEEDBALL #3506 OR EQUAL. **MSDS**
4020	EA	BLOCK PRINTING INK, WHITE	75 CC. SPEEDBALL #3506 OR EQUAL. **MSDS**
4022	EA	BLOCK PRINTING INK, YELLOW	75 CC. SPEEDBALL #3506 OR EQUAL. **MSDS**
4025	EA	BRUSH, ACRYLICS #1	SYNTHETIC FIBER, FLAT.
4028	EA	BRUSH, ACRYLICS #2	SYNTHETIC FIBER, FLAT.
4030	EA	BRUSH, ACRYLICS #4	SYNTHETIC FIBER, FLAT.
4032	EA	BRUSH, ACRYLICS #6	SYNTHETIC FIBER, FLAT.
4035	EA	BRUSH, ACRYLICS #8	SYNTHETIC FIBER, FLAT.
4038	EA	BRUSH, ACRYLICS #10	SYNTHETIC FIBER, FLAT.
4040	EA	BRUSH, EASEL #1	FLAT WHITE NATURAL BRISTLE.
4042	EA	BRUSH, EASEL #2	FLAT WHITE NATURAL BRISTLE.
4045	EA	BRUSH, EASEL #4	FLAT WHITE NATURAL BRISTLE.
4048	EA	BRUSH, EASEL #8	FLAT WHITE NATURAL BRISTLE.
4050	EA	BRUSH, EASEL #12	FLAT WHITE NATURAL BRISTLE.
4052	EA	BRUSH, WATER COLOR #4	CAMEL OR PONY HAIR, POINTED SHAPE. DICK BLICK SERIES 366 OR EQUAL.
4055	EA	BRUSH, WATER COLOR #7	CAMEL OR PONY HAIR, POINTED SHAPE. DICK BLICK SERIES 366 OR EQUAL.
4058	EA	BRUSH, WATER COLOR #10	CAMEL OR PONY HAIR, POINTED SHAPE. DICK BLICK SERIES 366 OR EQUAL.
4060	EA	BRUSH, WATER COLOR #12	CAMEL OR PONY HAIR, POINTED SHAPE. DICK BLICK SERIES 366 OR EQUAL.
4070	BX/50	CHARCOAL	1/4" X 6", MEDIUM.
4075	DZ	CHARCOAL PENCILS	4B

ART SUPPLIES CATALOG 3/24/98

STOCK #	UNIT	ITEM	DESCRIPTION
4080	PK/100	CHENILLE STEMS, ASST. COLORS	12" (ALSO CALLED PIPE CLEANERS)
4090	PK	CLAY, MODELING ASST. COLORS	FOUR 1/4 LB. STICKS PER PACKAGE. FOUR DIFFERENT COLORS. BINNEY & SMITH CLAYOLA OR EQUAL. **MSDS**
4092	PK	CLAY, MODELING BLUE	FOUR 1/4 LB. STICKS PER PACKAGE. BINNEY & SMITH CLAYOLA OR EQUAL. **MSDS**
4095	PK	CLAY, MODELING BROWN	FOUR 1/4 LB. STICKS PER PACKAGE. BINNEY & SMITH CLAYOLA OR EQUAL. **MSDS**
4098	PK	CLAY, MODELING GRAY	FOUR 1/4 LB. STICKS PER PACKAGE. BINNEY & SMITH CLAYOLA OR EQUAL. **MSDS**
4100	PK	CLAY, MODELING GREEN	FOUR 1/4 LB. STICKS PER PACKAGE. BINNEY & SMITH CLAYOLA OR EQUAL. **MSDS**
4105	PK	CLAY, MODELING RED	FOUR 1/4 LB. STICKS PER PACKAGE. BINNEY & SMITH CLAYOLA OR EQUAL. **MSDS**
4110	PK	CLAY, MODELING YELLOW	FOUR 1/4 LB. STICKS PER PACKAGE. BINNEY & SMITH CLAYOLA OR EQUAL. **MSDS**
4120	SET	CRAY-PAS, ASST. COLORS	REGULAR, 16 COLORS. SAKURA OR EQUAL. **MSDS**
4125	DZ	ERASER, KNEADED RUBBER	1 3/4" X 1 1/4" X 3/8". EBERHARD FABER #1224, GENERAL #139, OR EQUAL.
4128	DZ	ERASER, VINYL	2 1/4" X 1" X 7/16". FABER CASTELL MAGIC RUB #1954 OR EQUAL.
4135	PK/100	FELT, 9 X 12 ASST. COLORS	
4145	EA	GLITTER, BLACK	16 OZ. SHAKER CAN.
4148	EA	GLITTER, BLUE	16 OZ. SHAKER CAN.
4150	EA	GLITTER, COPPER	16 OZ. SHAKER CAN.
4152	EA	GLITTER, FUCHSIA	16 OZ. SHAKER CAN.
4155	EA	GLITTER, GREEN	16 OZ. SHAKER CAN.
4158	EA	GLITTER, GOLD	16 OZ. SHAKER CAN.
4160	EA	GLITTER, MULTI-COLOR	16 OZ. SHAKER CAN.
4162	EA	GLITTER, RED	16 OZ. SHAKER CAN.
4165	EA	GLITTER, SILVER	16 OZ. SHAKER CAN.
4168	EA	GLITTER, VIOLET	16 OZ. SHAKER CAN.
4175	EA	INK, INDIA	WATERPROOF, 2 OZ. CONTAINER. SPEEDBALL #3338 OR EQUAL. **MSDS**

ART SUPPLIES CATALOG 3/24/98

STOCK #	UNIT	ITEM	DESCRIPTION
4178	EA	INK, DRAWING BLUE	WATERPROOF, 2 OZ. CONTAINER. **MSDS**
4180	EA	INK, DRAWING RED	WATERPROOF, 2 OZ. CONTAINER. **MSDS**
4182	EA	INK, DRAWING WHITE	WATERPROOF, 2 OZ. CONTAINER. **MSDS**
4185	EA	INK, DRAWING YELLOW	WATERPROOF, 2 OZ. CONTAINER. **MSDS**
4190	EA	INKING PLATE & BENCH HOOK	SPEEDBALL #4135 OR EQUAL.
4195	EA	KNIFE, X-ACTO STYLE	X-ACTO #1 KNIFE WITH #11 BLADE OR EQUAL.
4198	PK/5	BLADES, X-ACTO KNIFE	FIVE #11 BLADES IN A PACKAGE.
4205	EA	LINOLEUM CUTTER HANDLE	SPEEDBALL #4131 OR EQUAL.
4208	DZ	LINOLEUM CUTTER #1	SPEEDBALL OR EQUAL.
4210	DZ	LINOLEUM CUTTER #2	SPEEDBALL OR EQUAL.
4212	DZ	LINOLEUM CUTTER #3	SPEEDBALL OR EQUAL.
4215	DZ	LINOLEUM CUTTER #4	SPEEDBALL OR EQUAL.
4218	DZ	LINOLEUM CUTTER #5	SPEEDBALL OR EQUAL.
4225	SET	PAINT, ACRYLIC 6 COLORS	SIX COLORS PER SET IN 2 OZ. TUBES. LIQUITEX BASIC COLOR SET #1037 OR EQUAL. **MSDS**
4235	EA	PAINT, FINGER BLACK	8 OZ. CONTAINER. **MSDS**
4238	EA	PAINT, FINGER BLUE	8 OZ. CONTAINER. **MSDS**
4240	EA	PAINT, FINGER BROWN	8 OZ. CONTAINER. **MSDS**
4242	EA	PAINT, FINGER GREEN	8 OZ. CONTAINER. **MSDS**
4245	EA	PAINT, FINGER ORANGE	8 OZ. CONTAINER. **MSDS**
4248	EA	PAINT, FINGER RED	8 OZ. CONTAINER. **MSDS**
4250	EA	PAINT, FINGER VIOLET	8 OZ. CONTAINER. **MSDS**
4252	EA	PAINT, FINGER WHITE	8 OZ. CONTAINER. **MSDS**
4255	EA	PAINT, FINGER YELLOW	8 OZ. CONTAINER. **MSDS**
4265	BX	PARIS-CRAFT	20 LB. BOX. **MSDS**
4270	SET	PASTELLOS, 24 COLORS	PRANG #1044-24 OR EQUAL.
4280	SET	PENCILS, COLORED 48 COLORS	7" PENCILS. BEROL PRISMACOLOR #PC955 OR EQUAL.
4285	DZ	PENCIL, LAYOUT	GENERAL'S #555, EBERHARD-FABER EBONY #6325, OR EQUAL.
4295	EA	PEN CLEANER	2 1/2 OZ. OF LIQUID. **MSDS**

ART SUPPLIES CATALOG 3/24/98

STOCK #	UNIT	ITEM	DESCRIPTION
4300	DZ	PEN HOLDER, CROW QUILL	HUNT #9452 OR EQUAL.
4305	DZ	PEN HOLDERS	SPEEDBALL #9451 OR EQUAL.
4310	DZ	PEN POINTS, CROW QUILL	HUNT #102 OR EQUAL. (USE WITH STOCK #4300.)
4315	DZ	PEN POINTS	GENERAL PURPOSE POINT FOR SPEEDBALL #9451 HOLDER. (USE WITH STOCK #4305.)
4318		PIPE CLEANERS	SEE #4080 (CHENILLE STEMS)
4320	1 LB	PLASTER, CASTING	YOUR BASIC PLASTER OF PARIS. SIZE OF PACKAGING MAY VARY. TELL ME HOW MANY POUNDS TOTAL YOU NEED. **MSDS** WE HAVE A LOT OF THIS. PLEASE THINK OF WAYS TO USE IT.
4325	BX	POLY PRINT	9" X 12", 12 PIECES PER BOX. SPEEDBALL #4166 OR EQUAL.
4330	PK/100 0	POPSICLE STICKS	
4335	BX/50	PYROMETRIC CONES #06	1 1/8" HIGH.
4338	PK	SANDPAPER, ASSORTED	15 SHEETS 9 X 10 SANDPAPER IN ASSORTED GRITS.
4340	PK/10	SANDPAPER, EXTRA FINE	9 X 10 SHEETS.
4342	PK/10	SANDPAPER, FINE	9 X 10 SHEETS.
4344	PK/10	SANDPAPER, MEDIUM	9 X 10 SHEETS.
4355	EA	TEMPERA, BLACK	LIQUID, 16 OZ. CONTAINER. CRAYOLA OR EQUAL. **MSDS**
4360	EA	TEMPERA, BLUE	LIQUID, 16 OZ. CONTAINER. CRAYOLA OR EQUAL. **MSDS**
4365	EA	TEMPERA, BROWN	LIQUID, 16 OZ. CONTAINER. CRAYOLA OR EQUAL. **MSDS**
4370	EA	TEMPERA, GOLD	LIQUID, 16 OZ. CONTAINER. CRAYOLA OR EQUAL. **MSDS**
4375	EA	TEMPERA, GREEN	LIQUID, 16 OZ. CONTAINER. CRAYOLA OR EQUAL. **MSDS**
4380	EA	TEMPERA, ORANGE	LIQUID, 16 OZ. CONTAINER. CRAYOLA OR EQUAL. **MSDS**
4385	EA	TEMPERA, PEACH	LIQUID, 16 OZ. CONTAINER. CRAYOLA OR EQUAL. **MSDS**
4390	EA	TEMPERA, RED	LIQUID, 16 OZ. CONTAINER. CRAYOLA OR EQUAL. **MSDS**

ART SUPPLIES CATALOG 3/24/98

STOCK #	UNIT	ITEM	DESCRIPTION
4395	EA	TEMPERA, SILVER	LIQUID, 16 OZ. CONTAINER. CRAYOLA OR EQUAL. **MSDS**
4400	EA	TEMPERA, VIOLET	LIQUID, 16 OZ. CONTAINER. CRAYOLA OR EQUAL. **MSDS**
4405	EA	TEMPERA, WHITE	LIQUID, 16 OZ. CONTAINER. CRAYOLA OR EQUAL. **MSDS**
4410	EA	TEMPERA, YELLOW	LIQUID, 16 OZ. CONTAINER. CRAYOLA OR EQUAL. **MSDS**
4420	EA	YARN, RUG BLACK	4 OZ. OF 4-PLY RUG YARN ON A CONE. 100% ACRYLIC. TRAIT-TEX OR EQUAL.
4425	EA	YARN, RUG BLUE	4 OZ. OF 4-PLY RUG YARN ON A CONE. 100% ACRYLIC. TRAIT-TEX OR EQUAL.
4430	EA	YARN, RUG GRAY	4 OZ. OF 4-PLY RUG YARN ON A CONE. 100% ACRYLIC. TRAIT-TEX OR EQUAL.
4435	EA	YARN, RUG GREEN	4 OZ. OF 4-PLY RUG YARN ON A CONE. 100% ACRYLIC. TRAIT-TEX OR EQUAL.
4440	EA	YARN, RUG ORANGE	4 OZ. OF 4-PLY RUG YARN ON A CONE. 100% ACRYLIC. TRAIT-TEX OR EQUAL.
4445	EA	YARN, RUG RED	4 OZ. OF 4-PLY RUG YARN ON A CONE. 100% ACRYLIC. TRAIT-TEX OR EQUAL.
4450	EA	YARN, RUG WHITE	4 OZ. OF 4-PLY RUG YARN ON A CONE. 100% ACRYLIC. TRAIT-TEX OR EQUAL.
4455	EA	YARN, RUG YELLOW	4 OZ. OF 4-PLY RUG YARN ON A CONE. 100% ACRYLIC. TRAIT-TEX OR EQUAL.
4465	SET	WATER COLORS	8 COLORS, WITH BRUSH, OVAL PANS. CRAYOLA #53-0080 OR EQUAL. **MSDS** SORRY, NOT CRAYOLA THIS YEAR.
4475	DZ	WATER COLOR REFILL, BLACK	OVAL PAN. CRAYOLA OR EQUAL. **MSDS**
4478	DZ	WATER COLOR REFILL, BLUE	OVAL PAN. CRAYOLA OR EQUAL. **MSDS**
4480	DZ	WATER COLOR REFILL, BROWN	OVAL PAN. CRAYOLA OR EQUAL. **MSDS**
4482	DZ	WATER COLOR REFILL, GREEN	OVAL PAN. CRAYOLA OR EQUAL. **MSDS**
4485	DZ	WATER COLOR REFILL, ORANGE	OVAL PAN. CRAYOLA OR EQUAL. **MSDS**
4488	DZ	WATER COLOR REFILL, RED	OVAL PAN. CRAYOLA OR EQUAL. **MSDS**
4490	DZ	WATER COLOR REFILL, VIOLET	OVAL PAN. CRAYOLA OR EQUAL. **MSDS**

AUDIO-VISUAL SUPPLIES 8/15/98

STOCK #	UNIT	ITEM	DESCRIPTION
4492	DZ	WATER COLOR REFILL, WHITE	OVAL PAN. CRAYOLA OR EQUAL. **MSDS**
4495	DZ	WATER COLOR REFILL, YELLOW	OVAL PAN. CRAYOLA OR EQUAL. **MSDS**

STOCK #	UNIT	ITEM	COMMENTS
5020	EA	BCK	

AUDIO-VISUAL SUPPLIES 8/15/98

STOCK #	UNIT	ITEM	COMMENTS
5100	EA	CAJ/CAC	
5110	EA	CAL	
5115	EA	CWA	
5180	EA	DAK/DAY	
5185	EA	DCF	
5200	EA	DDK	
5230	EA	DEK	
5260	EA	DLN	
5270	EA	DNF	
5280	EA	DRB	DRC MAY BE SUBSTITUTED.
5290	EA	DRC	DRB MAY BE SUBSTITUTED.
5320	EA	DWY/FAD	
5322	EA	DYH	
5325	EA	DYP	
5330	EA	DYS/DYV	
5340	EA	EHR	
5360	EA	ELC	EJL MAY BE SUBSTITUTED.
5380	EA	ELH	
5390	EA	EMM/EKS	
5395	EA	ENX	
5412	EA	EXR	
5415	EA	EYB	
5420	EA	FAL	
5430	EA	FCB	
5435	EA	FCM	
5450	EA	FFJ	
5460	EA	FHS	
5480	EA	FXL	
5500	EA	SAL	
5560	EA	G.E. 7 1/2 S	
5610	EA	D 140	NEEDLE FOR SYSTEM 80. ELECTRO-VOICE #197 OR EQUAL.

AUDIO-VISUAL SUPPLIES 8/15/98

STOCK #	UNIT	ITEM	COMMENTS
5630	EA	#89 NEEDLE	ELECTRO-VOICE #89 OR EQUAL.
5660	EA	VIDEO TAPE MBR-60	3M BROADCAST GRADE OR EQUAL. HIGH SCHOOL ONLY.
5665	EA	VIDEO TAPE CASSETTE, S-VHS	HIGH SCHOOL ONLY.
5669	EA	VIDEO TAPE CASSETTE, VHS 30 MINUTE	VHS T-30. SCOTCH OR EQUAL.
5670	EA	VIDEO TAPE CASSETTE, VHS 2 HOUR	VHS T-120. SCOTCH OR EQUAL.
5685	EA	VIDEO TAPE CASSETTE, VHS-C	

CUSTODIAL SUPPLIES 8/15/98
(AVAILABLE ITEMS NOT LISTED HERE ARE ON THE CUSTODIAL SUPPLY
REQUISITION FORM.)

STOCK #	UNIT	ITEM	DESCRIPTION
6005	BAG	ABSORBENT, OIL	ABSORBENT MATERIAL FOR CONTAINING AND CLEANING UP OIL SPILLS ON HARD FLOOR SURFACES. PACKAGED IN 50 LB. BAG. **MSDS**
6020	GAL.	BLEACH	LAUNDRY BLEACH PACKAGED IN GALLONS. **MSDS**
6048	EA	CARPET DEODORIZER	POWDER. SPRINKLE ON CARPET AND THEN VACUUM UP. LEAVES FRESH SCENT. PURO CHEMICAL COMPANY VACUUM-AIRE OR EQUAL. 20 OZ. CONTAINER. **MSDS**
6070	EA	CLEANSER, POWDER	AJAX OR SIMILAR. 21 OZ. CONTAINER. **MSDS**
6080	EA	DEODORANT BLOCK, URINAL	4 OZ. ROUND DEODORANT DISK FOR USE IN URINALS. **MSDS**
6085	EA	DEODORANT BLOCK, WALL	16 OZ. DEODORANT BLOCK PACKAGED IN A DISPOSABLE HANGER BOX. CONTINENTAL PURO P108 OR EQUAL. **MSDS**
6090	EA	DEODORANT BOTTLE	CONCENTRATED DEODORANT IN A 1 OZ. BOTTLE WITH PULL-UP WICK. EACH BOTTLE WILL HAVE ADHESIVE TO ATTACH IT TO WALL. **MSDS**
6095	EA	DETERGENT, LAUNDRY	LAUNDRY DETERGENT. MAY BE LIQUID OR POWDER. SIZE OF CONTAINER WILL VARY. ELEMENTARY SCHOOLS AND JR. HIGH WILL USUALLY GET 1/2 GALLON CONTAINERS, WHILE HIGH SCHOOL WILL GET LARGER. TIDE, WISK, OR EQUAL. **MSDS**
6170	PR	GLOVES, WORK	LEATHER AND CANVAS WORK GLOVES. ONE SIZE FITS ALL?
6175	PR	GLOVES, RUBBER SMALL	REUSABLE GLOVE TO WEAR DURING ROUTINE CLEANING. RUBBERMAID HEAVYWEIGHT 6031 OR EQUAL.
6180	PR	GLOVES, RUBBER MEDIUM	REUSABLE GLOVE TO WEAR DURING ROUTINE CLEANING. RUBBERMAID HEAVYWEIGHT 6033 OR EQUAL.
6185	PR	GLOVES, RUBBER LARGE	REUSABLE GLOVE TO WEAR DURING ROUTINE CLEANING. RUBBERMAID HEAVYWEIGHT 6034 OR EQUAL.
6190	PR	GLOVES, RUBBER X-LARGE	REUSABLE GLOVE TO WEAR DURING ROUTINE CLEANING. RUBBERMAID

CUSTODIAL SUPPLIES 8/15/98
(AVAILABLE ITEMS NOT LISTED HERE ARE ON THE CUSTODIAL SUPPLY
REQUISITION FORM.)

STOCK #	UNIT	ITEM	DESCRIPTION
			HEAVYWEIGHT 6035 OR EQUAL.
6195	BX/100	GLOVES, DISPOSABLE SMALL	DISPOSABLE RUBBER GLOVE USED ONE TIME FOR MESSY WORK AND THROWN AWAY. LATEX.
6200	BX/100	GLOVES, DISPOSABLE MEDIUM	DISPOSABLE RUBBER GLOVE USED ONE TIME FOR MESSY WORK AND THROWN AWAY. LATEX.
6205	BX/100	GLOVES, DISPOSABLE LARGE	DISPOSABLE RUBBER GLOVE USED ONE TIME FOR MESSY WORK AND THROWN AWAY. LATEX.
6320	EA	PUMICE STICK	1" X 1/2" X 6". FOR REMOVING MINERALS DEPOSITS, TOILET RINGS, ETC.
6350	CASE	SANITARY NAPKIN, #4	INDIVIDUALLY BOXED IN FOLD (#4) BOX FOR VENDING MACHINE. ADHESIVE STRIP, NO PINS. NEW FREEDOM #07370 OR EQUAL. 250 PER CASE. (HIGH SCHOOL)
6355	CASE	SANITARY NAPKIN, #8	INDIVIDUALLY BOXED IN FLAT (#8) BOX FOR VENDING MACHINE. ADHESIVE STRIP, NO PINS. NEW FREEDOM #07170 OR EQUAL. 250 PER CASE. (ELEMENTARY AND JR. HIGH SCHOOLS)
6390	EA	SPRAY BOTTLE WITH SPRAYER	32 OZ. UNLABELED BOTTLE WITH TRIGGER SPRAY HEAD.
6410	CASE	TAMPON	IN CARDBOARD TUBE FOR VENDING MACHINE. 500 PER CASE. TAMPAX REGULAR OR EQUAL.
6420	EA	TOILET BOWL BRUSH	NYLON BRISTLES TWISTED IN NYLON COATED WIRE. 15" HANDLE. HANDLE PRE-DRILLED FOR HANGING.
6445	EA	VOMIT ABSORBENT	ABSORBS AND DEODORIZES VOMITUS ON CARPET OR HARD FLOOR SURFACES. PACKAGED ONE POUND PER CONTAINER. HILLYARD "PURO MINT" OR EQUAL. **MSDS**
6490	CASE	FACIAL TISSUE (KLEENEX)	2-PLY, WHITE. 125 TISSUES PER BOX, 30 BOXES PER CASE.

BULBS & BALLAST CATALOG 8/15/98

STOCK #	UNIT	ITEM	COMMENTS
7005	EA	15A15/130	REGULAR 15 WATT BULB
7007	EA	15T7N	HIGH SCHOOL AUDITORIUM COURTESY LIGHTS.
7010	EA	20T6 1/2 /CF	FOR SOME EXIT SIGNS
7015	EA	25A130	REGULAR 25 WATT BULB
7020	EA	25G16 1/2 C/W	AROUND MIRROR IN DAYTONA DRESSING ROOM
7025	EA	25T10/277V	
7030	EA	25T10/CF/BL 120V	
7035	EA	40A/130	REGULAR 40 WATT BULB
7040	EA	60A/130	REGULAR 60 WATT BULB
7045	EA	75A/130	REGULAR 75 WATT BULB
7050	EA	75R30/FL 125-130	75 WATT INDOOR FLOOD
7055	EA	75PAR/FL 130	75 WATT OUTDOOR FLOOD
7060	EA	100A/130	REGULAR 100 WATT BULB
7063	EA	100A/277	
7065	EA	100PAR/FL 125-130	100 WATT OUTDOOR FLOOD
7075	EA	150A/130	REGULAR 150 WATT BULB
7080	EA	150R/FL 125-130	150 WATT INDOOR FLOOD
7085	EA	300/IF 125 V	HS AUDITORIUM HOUSE LIGHTS
7095	EA	400G/SP	SPOTLIGHT FOR DAYTONA STAGE
7100	EA	500T3Q/CL	
7105	EA	1500T3Q/CL/277V	
7115	EA	C150S55	WAS USED IN HIGH SCHOOL PARKING LOT
7116	EA	F5BX/SPX27	5 WATT BIAXIAL COMPACT FLUORESCENT LAMP
7118	EA	F7BX/SPX27	7 WATT BIAXIAL COMPACT FLUORESCENT LAMP
7120	EA	F8T5/CW	
7122	EA	F13BX/SPX35	13 WATT BIAX COMPACT FLUORESCENT LAMP
7125	EA	F13T5/CW	
7130	EA	F15T8/CW	

BULBS & BALLAST CATALOG 8/15/98

STOCK #	UNIT	ITEM	COMMENTS
7135	EA	F20T12/CW	
7140	CS/25	F32T8/TL735	NEW BULB INSTALLED AT SOME SCHOOLS DURING SUMMER 1992
7145	CS/30	F40CW/RS/EW-II	4' DOUBLE PIN
7150	CS/15	F96T12/CW/SS	
7155	CS/15	F96T12CW/VHO/SS	
7160	CS/12	FB40/CW/6/EW-II	U-SHAPED FLUORESCENT FOR ORO GRANDE, TBOLT, & NAUTILUS
7170	EA	H33GL-400DX	
7175	EA	H38MP-100/DX	
7178	EA	H39KC-175/DX	
7180	EA	LU70	ALSO CALLED C70S62
7185	EA	LU100	ALSO CALLED C100S54
7190	EA	LU250	ALSO CALLED C250S50
7195	EA	HR175DX39-22	
7205	EA	M400/C/U	ALSO CALLED MH400BU/C
7207	EA	MH250/U	
7210	EA	MH1000BU/C	
7215	EA	MVR250/U	HIGH SCHOOL PARKING LOT
7220	EA	NHT50SDX	
7300	EA	BALLAST	FOR ONE F40T12 AT 120 VOLTS
7305	EA	BALLAST	FOR ONE F40T12 AT 277 VOLTS
7310	EA	BALLAST	FOR TWO F40T12 AT 120 VOLTS
7315	EA	BALLAST	FOR TWO F40T12 AT 277 VOLTS
7320	EA	BALLAST	FOR THREE F40T12 AT 120 VOLTS
7325	EA	BALLAST	FOR TWO F96T12 AT 120 VOLTS
7335	EA	BALLAST	FOR ONE F96T12VHO AT 120 VOLTS
7340	EA	BALLAST	FOR TWO F96T12 VHO OR SHO AT 120 VOLTS
7500	EA	MOTOROLA ELECTRONIC BALLAST	FOR ONE F32T8 BULB AT 120 VOLTS
7505	EA	MOTOROLA ELECTRONIC BALLAST	FOR TWO F32T8 BULBS AT 120 VOLTS
7510	EA	MOTOROLA ELECTRONIC	FOR THREE F32T8 BULBS AT 120

BULBS & BALLAST CATALOG 8/15/98

STOCK #	UNIT	ITEM	COMMENTS
		BALLAST	VOLTS
7520	EA	MOTOROLA ELECTRONIC BALLAST	FOR ONE F32T8 BULB AT 277 VOLTS
7535	EA	MOTOROLA ELECTRONIC BALLAST	FOR FOUR F32T8 BULBS AT 277 VOLTS

COMPUTER SUPPLIES CATALOG 1/1/99

STOCK #	UNIT	ITEM	DESCRIPTION
8005	BX/10	DISK, COMPUTER 3 1/2" DS/DD	3 1/2" DISK, DOUBLE SIDED, DOUBLE DENSITY. FOR APPLE 3.5" DISK DRIVES AND OLD IBM/IBM CLONE SYSTEMS.
8010	BX/10	DISK, COMPUTER 3 1/2" HIGH DENSITY, IBM FORMAT	3 1/2" DISK, DOUBLE SIDED, HIGH DENSITY. FORMATTED FOR IBM 1.44MB DRIVES.
8015	BX/10	DISK, COMPUTER 5 1/4" DS/DD	5 1/4" DISK, DOUBLE SIDED, DOUBLE DENSITY. FOR APPLE 5.25 DISK DRIVES. ALSO FOR XEROX MEMORYWRITERS WITH DISK DRIVES.
8020	BX/10	DISK, COMPUTER 5 1/4" DS/HD IBM FORMAT	5 1/4" DISK, DOUBLE SIDED, HIGH DENSITY. FORMATTED FOR IBM 1.2MB DISK DRIVES.
8025	EA	DISK DRIVE CLEANER, 3 1/2"	CLEANING KIT FOR 3 1/2" DISK DRIVES. COMES WITH CLEANING DISK AND BOTTLE OF CLEANING FLUID.
8030	EA	DISK DRIVE CLEANER, 5 1/4"	CLEANING KIT FOR 5 1/4" DISK DRIVES. COMES WITH CLEANING DISK AND BOTTLE OF CLEANING FLUID.
8035	EA	KEYBOARD, IBM, PS/2	REPLACEMENT KEYBOARD WITH 3/8" DIAMETER, 7 PIN (6 METAL PINS, 1 PLASTIC PIN), MALE PLUG ON END OF ITS CORD.
8036	EA	KEYBOARD, IBM, AT	REPLACEMENT KEYBOARD WITH 1/2" DIAMETER, 5 PIN, MALE PLUG ON END OF ITS CORD.
8040	EA	MOUSE, 2 BUTTON, PS/2	FOR THE OLDER IBM COMPUTERS FOUND IN SOME OF OUR COMPUTER LABS. HAS A ROUND, 6 PIN, MALE PLUG ON END OF ITS CORD. IF YOU ARE REPLACING A BAD MOUSE, PLEASE SEND THE BAD ONE BACK TO GARY.
8045	EA	MOUSE, 2 BUTTON	FOR MOST OF OUR IBM COMPATIBLE COMPUTERS. HAS A 9 HOLE, FEMALE PLUG ON THE END OF ITS CORD. IF YOU ARE REPLACING A BAD MOUSE, PLEASE SEND THE BAD ONE BACK TO GARY.
8050	EA	MOUSE PAD	PROVIDES TRACKING SURFACE FOR YOUR MOUSE. SORRY, NO COLOR OR DESIGN CHOICES.
8055	EA	POWER STRIP, 6 OUTLET	WITH PUSH-TO-RESET CIRCUIT BREAKER. 4 FOOT CORD.

COMPUTER SUPPLIES CATALOG 1/1/99

STOCK #	UNIT	ITEM	DESCRIPTION
8060	EA	PRINTER CABLE	CONNECTS IBM COMPATIBLE COMPUTER TO PRINTER. 6 FEET LONG.

TYPING, FAX, & PRINTING SUPPLIES CATALOG 1/15/00

STOCK#	UNIT	ITEM	DESCRIPTION	COMMENTS
9000	****	RIBBON, CALCULATOR	USE THIS STOCK # TO ORDER ANY CALCULATOR RIBBON. SHOW MAKE & MODEL NUMBER OF YOUR MACHINE ON THE REQUISITION. SAVE END FLAP FROM BOX YOUR LAST RIBBON CAME IN AND TAPE IT TO THE BOTTOM OF YOUR MACHINE. SEND THE FLAP WITH YOUR NEXT RIBBON ORDER.	****
	****	PRINTER RIBBONS *****NOTE*****	"USED AT" COLUMN SHOWS WHICH SCHOOLS USE SOME RIBBONS USING THIS CODE. 01 SMOKETREE 05 NAUTILUS 02 JR. HIGH 06 ORO GRANDE 03 HAVASUPAI 08 DAYTONA 07 HIGH SCHOOL 04 STARLINE 20 DIST. OFFICE	****
9010	EA	APPLE IMAGEWRITER I & II	CARTRIDGE RIBBON, BLACK INK.	ALL SCHOOLS
9015	EA	STAR SJ-144 PRINTER	BLACK INK. STAR #T144BK.	07
9020	EA	BULL 4/24 PRINTER	CARTRIDGE RIBBON. BLACK INK. BULL #M3951. ALSO FITS EPSON FX286.	06, 05
9030	EA	BULL 4/41 PRINTER	CARTRIDGE RIBBON, BLACK INK. BULL #M3947.	20
9035	EA	CANON BUBBLE JET BJC-240 PRINTER	BLACK INK. CANON BC-02 OR EQUAL. PLEASE RETURN OLD, EMPTY CARTRIDGE TO GARY.	05
9040	EA	CITIZEN GSX-230 PRINTER	CARTRIDGE RIBBON, BLACK INK.	02
9060	EA	COMMODORE 1526 PRINTER	CARTRIDGE RIBBON. ALSO FITS LEGEND 880 AND MANNESMANN TALLY MT80.	
9070	EA	EPSON INK JET CARTRIDGE S020047	BLACK INK CARTRIDGE FOR EPSON STYLUS COLOR II & IIs	
9073	EA	EPSON INK JET CARTRIDGE S020093	BLACK INK CARTRIDGE FOR EPSON STYLUS COLOR 400, 500, 600	
9075	EA	EPSON DFX-8500 PRINTER	EPSON #8766	07

TYPING, FAX, & PRINTING SUPPLIES CATALOG 1/15/00

STOCK#	UNIT	ITEM	DESCRIPTION	COMMENTS
9080	EA	EPSON LQ-500 PRINTER	CARTRIDGE RIBBON. EPSON #7753B.	20
9090	EA	EPSON MX80 PRINTER & EPSON LX300	CARTRIDGE RIBBON FOR EPSON MX80, FX80, RX80 DOT MATRIX PRINTERS. BLACK INK. EPSON #8750.	
9090.1	EA	HEWLETT PACKARD INKJET CARTRIDGE C6615A	BLACK INK. PLEASE SEND OLD, EMPTY CARTRIDGE BACK TO GARY.	
9091	EA	HEWLETT PACKARD INK JET CARTRIDGE 51604A	BLACK INK. PLEASE SEND OLD, EMPTY CARTRIDGE BACK TO GARY.	07
9092	EA	HEWLETT PACKARD INKJET CARTRIDGE 51605R	RED INK. PLEASE SEND OLD, EMPTY CARTRIDGE BACK TO GARY. USED IN A SCANNER.	07
9093	EA	HEWLETT PACKARD INK JET CARTRIDGE 51626A	BLACK INK. PLEASE SEND OLD, EMPTY CARTRIDGE BACK TO GARY.	
9094	EA	HEWLETT PACKARD INK JET CARTRIDGE 51629A	BLACK INK. PLEASE SEND OLD, EMPTY CARTRIDGE BACK TO GARY.	ALL SCHOOLS
9094.1	EA	HEWLETT PACKARD INK JET CARTRIDGE 51640A	BLACK INK. PLEASE SEND OLD, EMPTY CARTRIDGE BACK TO GARY.	07
9095	EA	HEWLETT PACKARD INK JET CARTRIDGE 51645A	BLACK INK. PLEASE SEND OLD, EMPTY CARTRIDGE BACK TO GARY.	20
9100	EA	HONEYWELL 34 PRINTER	CARTRIDGE RIBBON BLACK INK. HONEYWELL #3925 OR EQUAL.	01, 02, 03, 04, 07
9120	EA	IBM PROPRINTER 4201	CARTRIDGE RIBBON FOR IBM PROPRINTER WITH STANDARD CARRIAGE WIDTH. BLACK INK. IBM #6328829.	20, 04
9130	EA	IBM PROPRINTER 4202 XL	CARTRIDGE RIBBON. THIS IS A WIDE CARRIAGE PRINTER. BLACK INK. IBM #1040150.	05, 06
9135	EA	IBM 2380 PRINTER	CARTRIDGE RIBBON. BLACK INK. IBM PART #1040930, GRC T443- 5NB, OR EQUAL.	04
9137	EA	KODAK DICONIX PRINTHEAD CARTRIDGE	FOR KODAK DICONIX INK JET PRINTER. BLACK INK. KODAK #822-3893, HP92261A FOR INK JET PAPER, OR HP51604A FOR	07

TYPING, FAX, & PRINTING SUPPLIES CATALOG 1/15/00

STOCK#	UNIT	ITEM	DESCRIPTION	COMMENTS
			PLAIN PAPER.	
9138	EA	LEXMARK INK JET CARTRIDGE 13400HC	BLACK INK, FOR LEXMARK 1100 JETPRINTER. SEND OLD CARTRIDGE BACK TO GARY.	07
9140	EA	NEC SPINWRITER 350 PRINTER	CARTRIDGE RIBBON. BLACK INK. NEC #50-030.	07
9150	EA	OKIDATA 80 PRINTER	DOUBLE SPOOL RIBBON. BLACK INK. ALSO FITS STAR SG-10 PRINTER.	
9155	EA	OKIDATA MICROLINE 321 PRINTER	CARTRIDGE RIBBON FOR OKIDATA MICROLINE 320/321. BLACK INK. OKIDATA #52102001.	02, 07
9156	EA	OKIDATA PACEMARK 3410 PRINTER	CARTRIDGE RIBBON. BLACK INK.	07
9160	EA	PANASONIC KX-P1091 PRINTER	CARTRIDGE RIBBON. BLACK INK. PANASONIC #KX-P110i.	01
9170	EA	PANASONIC KX-P1124 & KX-P1123 PRINTER	CARTRIDGE RIBBON FOR PANASONIC KX-P1124, KX-P1123 AND KX-P1124i PRINTER. BLACK INK. PANASONIC KX-P145.	07, 20, 03
9175	EA	PANASONIC KX-P1180 PRINTER	BLACK INK. PANASONIC KX-P115.	07
9180	EA	PANASONIC KX-P1624 PRINTER	CARTRIDGE RIBBON. BLACK INK. PANASONIC KX-P155.	07
9185	EA	PANASONIC KX-P2123 & 2180 PRINTER	CARTRIDGE RIBBON. BLACK INK. PANASONIC KX-P150.	
9190	EA	STAR NX-10 PRINTER	CARTRIDGE RIBBON. BLACK INK.	
9200	EA	STAR NX-15 PRINTER	CARTRIDGE RIBBON FOR STAR NX-15 PRINTER. THIS IS A WIDE CARRIAGE PRINTER. BLACK INK. STAR #80980760.	07
9210	EA	STAR NX-1000 PRINTER	CARTRIDGE RIBBON. BLACK INK. STAR #80980850.	07
9220	EA	STAR SG-10 PRINTER	SAME AS STOCK NUMBER 9150. ORDER THAT INSTEAD.	
9230	EA	TEXAS INSTRUMENTS TI865 PRINTER	CARTRIDGE RIBBON. T.I. #2239391-0002.	07

TYPING, FAX, & PRINTING SUPPLIES CATALOG 1/15/00

STOCK#	UNIT	ITEM	DESCRIPTION	COMMENTS
9235	EA	TOSHIBA P1350 PRINTER	CARTRIDGE RIBBON, BLACK INK. GRC T464-4NB.	
	****	LASER PRINTER SUPPLIES	****	
9342	EA	BROTHER HL-645 LASER PRINTER DRUM UNIT	BROTHER #DR-100.	01, 02, 03, 05, 07
9343	EA	BROTHER HL-645 LASER PRINTER TONER CARTRIDGE	BROTHER #TN-100HL.	01, 02, 03, 05, 07
		EPS CARTRIDGE (FITS SEVERAL PRINTERS)	THE SAME AS STOCK #9350. ORDER THAT ONE.	
9350	EA	HEWLETT PACKARD LASERJET II & III TONER CARTRIDGE	HP #92295A OR EQUAL. **MSDS**	ALL SCHOOLS
9352	EA	HEWLETT PACKARD LASERJET 4P & 4L TONER CARTRIDGE	HP #92274A. **MSDS**	20
9354	EA	HEWLETT PACKARD LASERJET 4Si TONER CARTRIDGE	HP #92291A. **MSDS**	20
9356	EA	HEWLETT PACKARD LASERJET 4Si MAINTENANCE CARTRIDGE	HP #C2026A. **MSDS**	20
9358	EA	HEWLETT PACKARD LASERJET 1100 TONER CARTRIDGE	HP #C4092A. **MSDS**	
9360	EA	HEWLETT PACKARD LASERJET 2100 SERIES TONER CARTRIDGE	HP #C4096A. **MSDS**	02, 08, 07
9370	EA	HEWLETT PACKARD LASERJET 4000N TONER CARTRIDGE	HP #C4127X **MSDS**	07, 08
9372	EA	HEWLETT PACKARD LASERJET 5L & 6L TONER CARTRIDGE	HP #C3906A. **MSDS**	
9373	EA	HEWLETT PACKARD LASERJET 5P, 6P, 6Pxi, 5MP & 6MP TONER CARTRIDGE	HP #C3903A. **MSDS**	

TYPING, FAX, & PRINTING SUPPLIES CATALOG 1/15/00

STOCK#	UNIT	ITEM	DESCRIPTION	COMMENTS
9374	EA	HEWLETT PACKARD LASERJET 5Si TONER CARTRIDGE	HP #C3909A. **MSDS**	07
9375	EA	IBM LEXMARK 4037 5E LASER PRINTER TONER CARTRIDGE	IBM #1382760.	01
9378	EA	NEC SILENTWRITER SUPERSCRIP 660 TONER CARTRIDGE	NEC #20061	06
9380	EA	PANASONIC KX- P4410 LASER PRINTER CORONA	PANASONIC #KXPCR3.	07
9390	EA	PANASONIC KX- P4410 LASER PRINTER DEVELOPER UNIT	PANASONIC KXPDP4. **MSDS**	07
9400	EA	PANASONIC KX- P4410 LASER PRINTER DRUM UNIT	PANASONIC #KXPDM5.	07
9410	EA	PANASONIC KX- P4410 LASER PRINTER FUSER	PANASONIC KXPFS5. **MSDS**	07
9420	EA	PANASONIC KX- P4410 LASER PRINTER TONER KIT	PANASONIC KXP453. **MSDS**	07
9430	EA	PANASONIC KX- P4420 LASER PRINTER DEVELOPER	PANASONIC KX-PDP2 (18,000 PAGES) **MSDS**	02
9440	EA	PANASONIC KX- P4420 LASER PRINTER DRUM UNIT	PANASONIC KX-PDM2.	02
9450	EA	PANASONIC KX- P4420 LASER PRINTER TONER KIT	PANASONIC #KX-P451 (3,000 PAGES) **MSDS**	02
9460	EA	PANASONIC KX- P4450 LASER PRINTER DEVELOPER	PANASONIC #KX-PDP1. ALSO WORKS IN PANASONIC KX- P4450i PRINTER. **MSDS**	07

TYPING, FAX, & PRINTING SUPPLIES CATALOG 1/15/00

STOCK#	UNIT	ITEM	DESCRIPTION	COMMENTS
9470	EA	PANASONIC KX-P4450 LASER PRINTER DRUM UNIT	PANASONIC #KX-PDM1. ALSO WORKS IN PANASONIC KX-P4450i PRINTER. (10,000 PAGES)	07
9480	EA	PANASONIC KX-P4450 LASER PRINTER TONER KIT	PANASONIC #KX-P450 ALSO WORKS IN PANASONIC KX-P4450i PRINTER. **MSDS**	07
9490	EA	XEROX DOCUPRINT N17 LASER PRINTER TONER	XEROX #113R00095	08 10,000 COPIES
9491	EA	XEROX DOCUPRINT N17 LASER PRINTER FUSER	XEROX #108R00092	08 200,000 COPIES
	****	TYPEWRITER RIBBONS *****NOTE*****	<i>RIBBONS FOR OLDER TYPEWRITERS ARE NOT LISTED HERE. ASK FOR THEM ON A WAREHOUSE REQUISITION. MENTION THE MAKE AND MODEL OF YOUR MACHINE, AND WHETHER IT IS MANUAL OR ELECTRIC.</i>	****
9620	EA	IBM SELECTRIC 71 TYPEWRITER RIBBON	DOUBLE SPOOL RIBBON FOR IBM SELECTRIC 71. BLACK INK.	
9630	EA	IBM SELECTRIC 72 TYPEWRITER RIBBON	CARTRIDGE RIBBON. IBM #1136138 OR EQUAL.	
9640	EA	IBM SELECTRIC II TYPEWRITER RIBBON	CORRECTABLE CARTRIDGE RIBBON FOR IBM SELECTRIC II. BLACK INK. IBM #1299095 OR EQUAL. (ALSO WORKS IN OLDER SELECTRIC III'S AND SOME BROTHER BRAND PRINTERS.)	
9650	EA	IBM SELECTRIC III TYPEWRITER RIBBON	CORRECTABLE CARTRIDGE FOR NEWER IBM SELECTRIC III'S. BLACK INK. IBM #1299508 OR EQUAL. (OLDER SELECTRIC III'S USE STOCK #9640 LISTED ABOVE.)	
9660	EA	IBM SELECTRIC II & III LIFT-OFF CORRECTION TAPE	IBM #1136433 OR EQUAL.	
9680	EA	IBM WHEELWRITER	CARTRIDGE RIBBON. BLACK INK.	07

TYPING, FAX, & PRINTING SUPPLIES CATALOG 1/15/00

STOCK#	UNIT	ITEM	DESCRIPTION	COMMENTS
		#5 RIBBON	IBM #1380999.	
9690	EA	IBM WHEELWRITER #5 LIFT-OFF CORRECTION TAPE.	IBM 1337765.	07
9700	EA	XEROX 60 SERIES TYPEWRITER RIBBON	FOR XEROX 60 SERIES MEMORYWRITERS SUCH AS THE 6010 AND 6020. BLACK INK. XEROX #8R2335.	
9710	EA	XEROX 60 SERIES TYPEWRITER LIFT- OFF CORRECTION TAPE	LIFT-OFF TAPE FOR XEROX 60 SERIES MEMORYWRITERS LIKE THE 6010 AND 6020. XEROX 8R2971.	
9720	EA	XEROX 600 SERIES TYPEWRITER RIBBON	FOR XEROX 600 SERIES MEMORYWRITERS LIKE THE 630 AND 645. BLACK INK. XEROX #8R2301.	
9730	EA	XEROX 600 SERIES TYPEWRITER LIFT- OFF CORRECTION TAPE	LIFT-OFF CORRECTION TAPE FOR XEROX 600 SERIES MEMORYWRITERS LIKE THE 630 AND 645. XEROX #8R1187.	
	****	FAX MACHINE SUPPLIES	****	
9740	EA	BROTHER FAX RIBBON PC-301		08